

The background is a detailed marbled pattern with swirling veins of light beige, grey, and brown. The text 'ARLINGTON PARK' is centered in a white, serif font. 'ARLINGTON' is on the top line and 'PARK' is on the line below it.

ARLINGTON
PARK

MAJID

A close-up photograph of a woman with light brown hair and blue eyes, looking through a dense thicket of green leaves. A single red flower is tucked into her hair. The lighting is soft and natural, creating a bokeh effect with the background foliage. The overall mood is serene and peaceful.

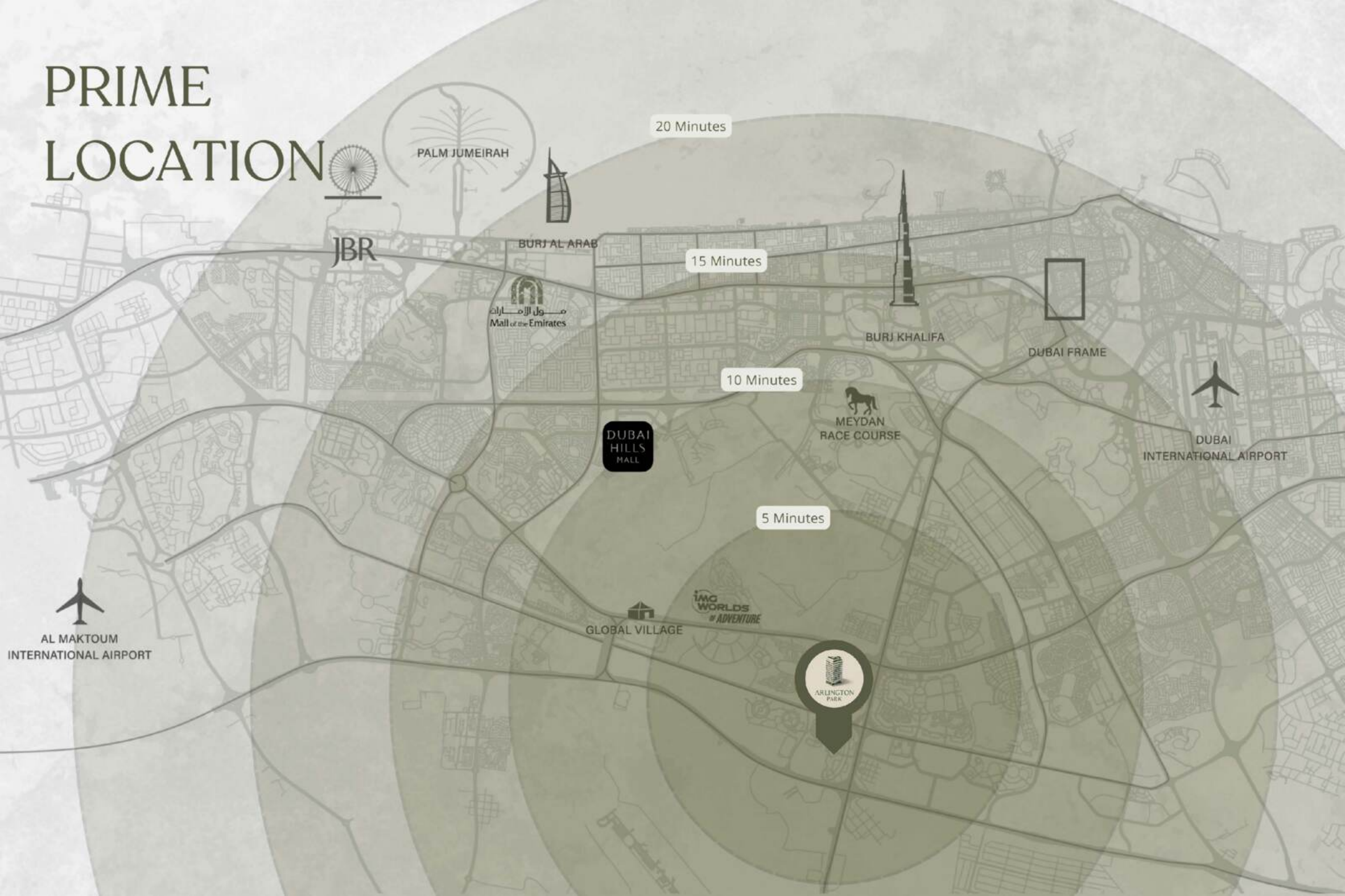
WHERE URBAN
EASE MEETS
NATURAL PEACE

AT THE CENTRE OF POSSIBILITY

Dubai Land Residence Complex, one of Dubai's most promising residential zones. It offers a lifestyle that is close to everything yet, away from the noise. Whether it's a quick commute to Downtown, a peaceful walk in lush surroundings, or access to daily conveniences, Arlington Park places you where it all flows together.



PRIME LOCATION



NEAR
EVERYTHING.
FAR FROM
ORDINARY.



Perfectly positioned in the heart of Dubai Land Residential Complex (DLRC), Arlington Park places you just minutes away from the places that matter most. From top-tier schools and academic hubs to vibrant shopping destinations and healthcare centers.

Whether you're planning your child's future, your next grocery run, or a relaxed weekend at the mall, everything is effortlessly within reach.

- The Aquila School – 1 minute
- GEMS FirstPoint School – The Villa – 3 minutes
- Silicon Central Mall – 7 minutes
- Dubai Silicon Oasis – 9 minutes
- Dubai International Academic City – 9 minutes



GREENSPACE, GROUNDED LIVING

The Dubai Land Residence Complex community offers an expansive network of parks, walking trails, and landscaped pockets to unwind and reconnect. Arlington Park benefits from:

Access to
landscaped parks

Jogging paths &
cycling zones

Pet-friendly zones &
shaded areas

Open-air fitness and
gathering spaces

WELCOME TO ARLINGTON PARK

Arlington Park offers modern apartment living in Dubai Land. The tower rises with purpose, home to 140 fully optimized apartments across studios, one- and two-bedroom layouts. Every element is tailored to complement the rhythm of everyday life, from smart unit sizing to premium finishes and lifestyle-oriented spaces.



A woman with long, wavy, reddish-brown hair is seen from behind, wearing a white, sleeveless, tiered dress. Her arms are raised high, palms facing forward, in a gesture of openness or prayer. She stands in a field of tall green grass. The background is a soft-focus landscape of green trees and bushes under a bright, hazy sky, suggesting a sunset or sunrise. The overall mood is peaceful and serene.

IN THE
PRESENCE
OF PEACE

LIFESTYLE ON EVERY LEVEL

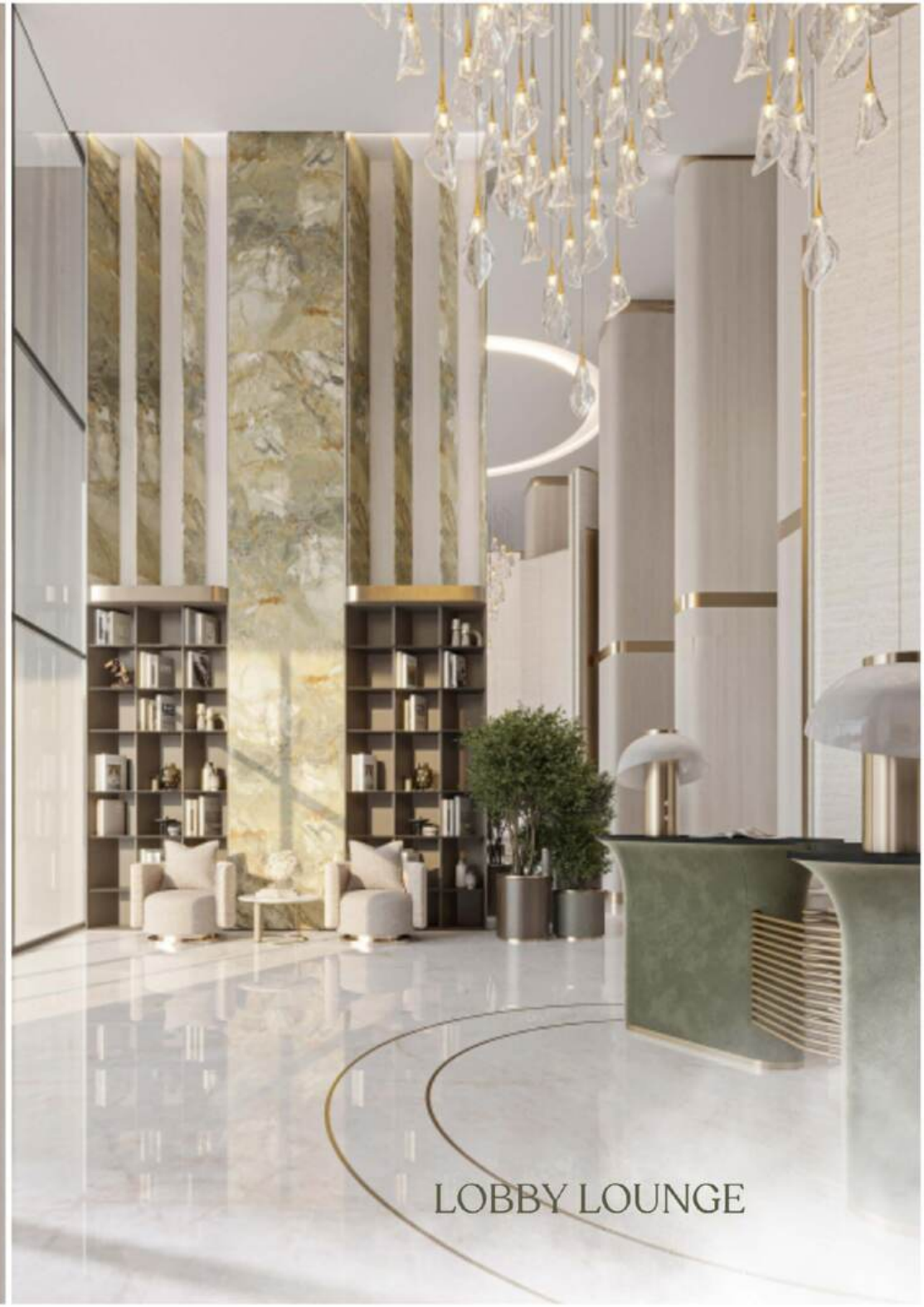
From rooftop retreats to indoor vitality zones, Arlington Park transforms your lifestyle into a daily experience of comfort, energy, and leisure.





ARLINGTON
PARK

GRAND ENTRANCE



LOBBY LOUNGE

ARLINGTON
PARK



ARLINGTON
PARK



ELEVATORS



LEISURE & WELLNESS ABOVE ALL

At Arlington Park, leisure is a pillar. Calm mornings meet indulgent evenings. From energizing workouts to serene rooftop moments, every amenity is designed to elevate your wellbeing. Dive in, unwind, and savor life above the city.

AMENITIES



Exclusive Lounge



Community & Park View



Chic Bar Area



Infinity Pool



Gymnasium



Yoga Space



Lush Garden Spaces



Barbeque Area



Sauna room



Pool Table



Foosball Table



Cold plunge



ARLINGTON
PARK

GYMNASIUM



ARLINGTON
PARK



ARLINGTON
PARK

CO WORKING SPACES



ARLINGTON
PARK

LOUNGE & COFFEE BAR

GAME
ZONE

ARLINGTON
PARK

GAME ZONE



ARLINGTON
PARK

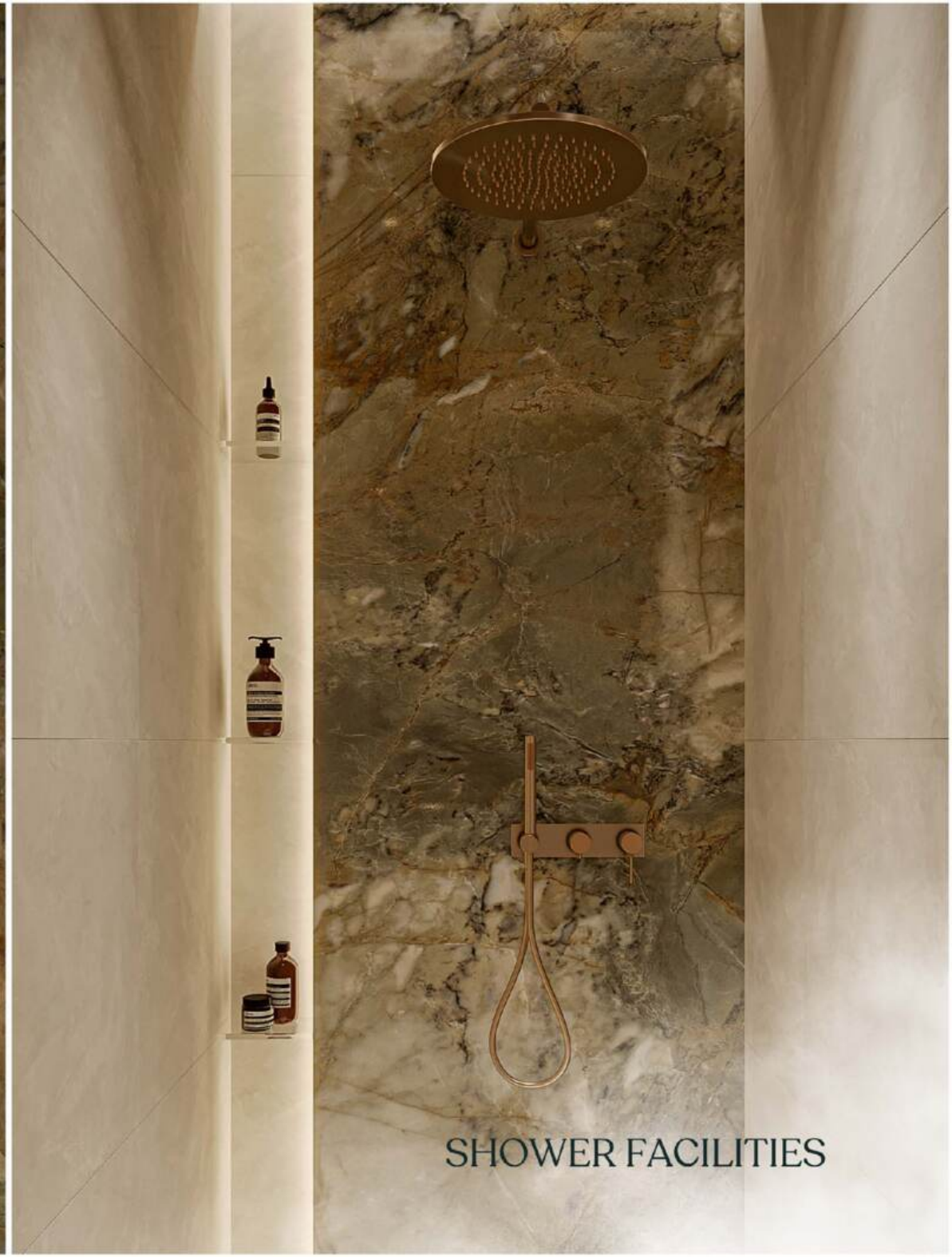


SAUNA & STEAM ROOMS





ARLINGTON
PARK



SHOWER FACILITIES



ARLINGTON
PARK

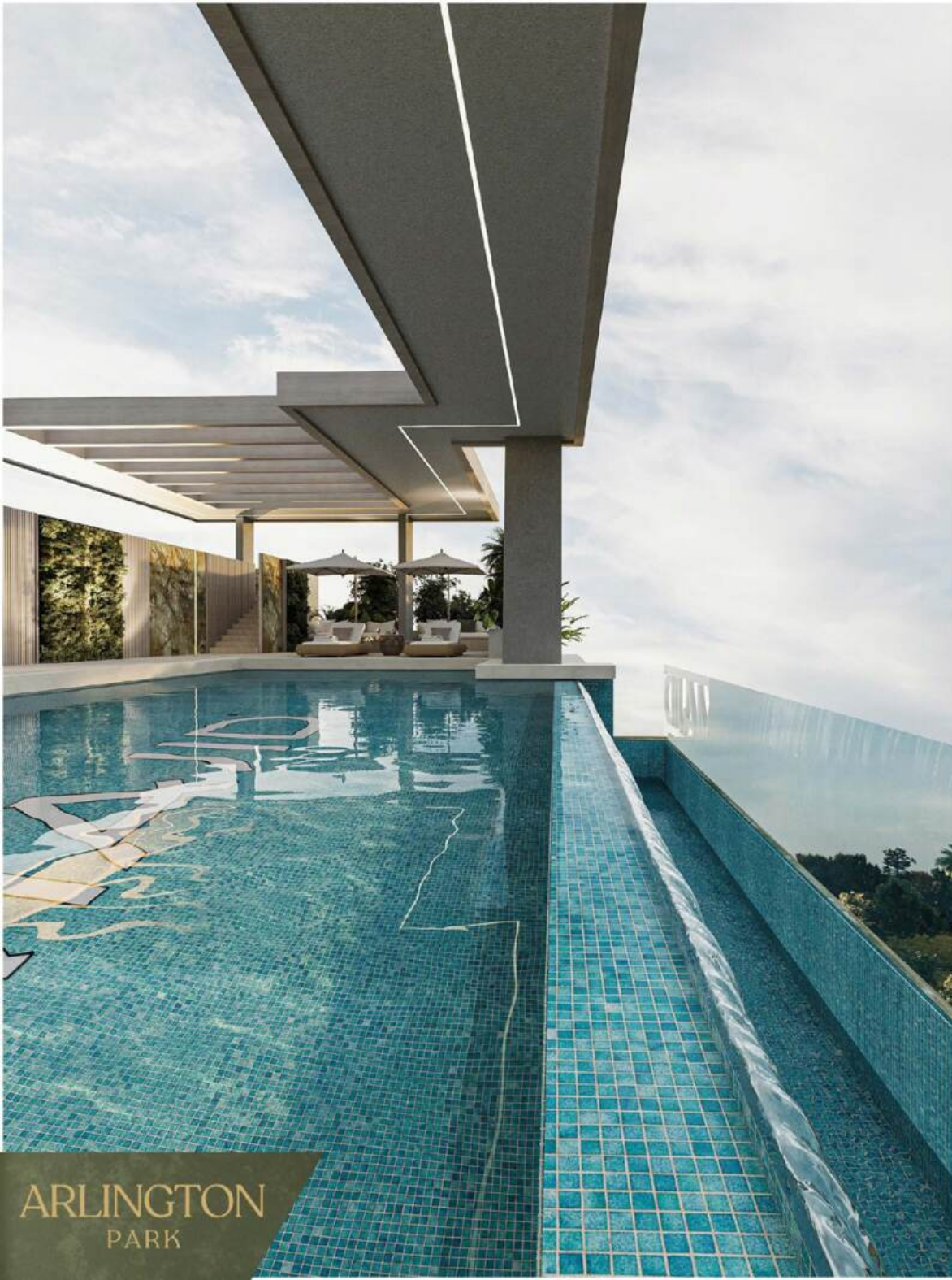


CHANGING ROOMS

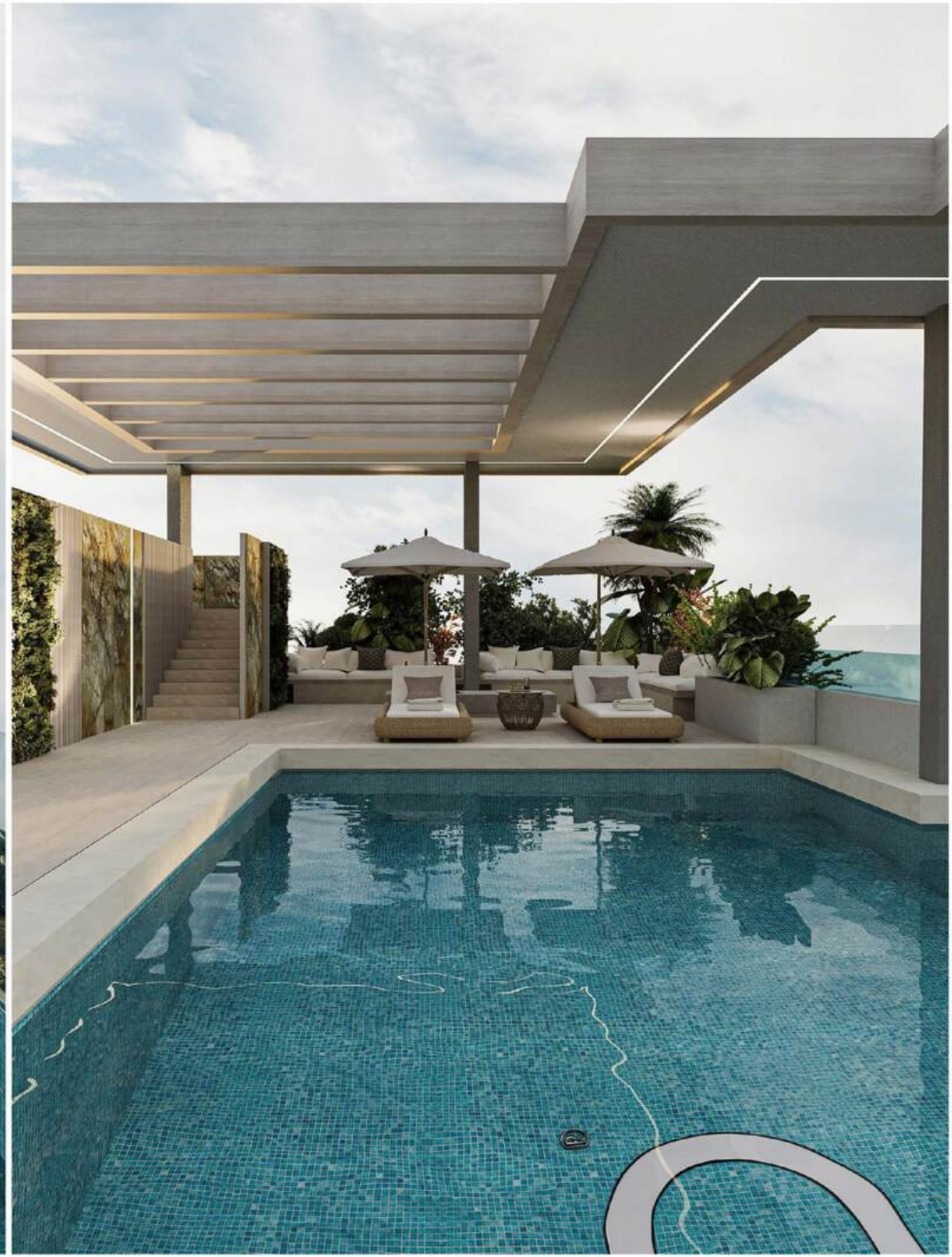


ARLINGTON
PARK

INFINITY POOL



ARLINGTON
PARK





THE RESIDENCES

Each apartment at Arlington Park is delivered fully furnished. Ensuring your space reflects your taste and comfort. Each unit is a modern canvas designed with sunlit layouts, serene finishes, and efficient flow.

CURATED STUDIO RESIDENCES



Sleek studio with warm neutral tones, modern finishes, soft lighting, custom cabinetry, and a cozy layout that blends luxury, functionality, and timeless aesthetic in perfect harmony.



ARLINGTON
PARK

LIVING AREA



ARLINGTON
PARK



ARLINGTON
PARK





ARLINGTON
PARK



ARLINGTON
PARK

KITCHEN





ARLINGTON
PARK

CURATED ONE & TWO- BEDROOM RESIDENCES



Spacious residences adorned with warm neutral palettes, refined finishes, ambient lighting, and bespoke cabinetry. Thoughtfully designed to blend luxury, practicality, and timeless elegance for modern living.







DINING AREA

ARLINGTON
PARK



ARLINGTON
PARK

KITCHEN



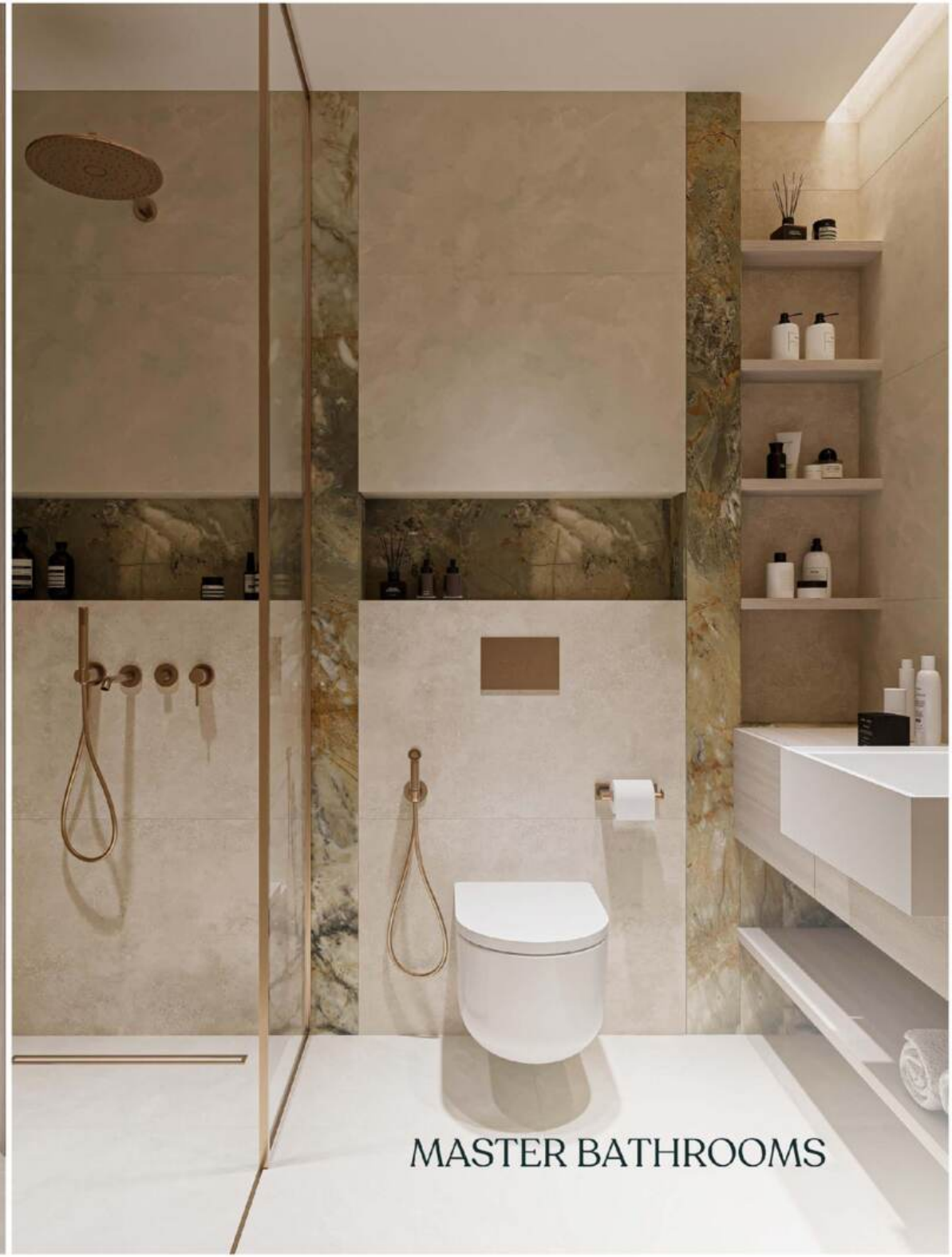


ARLINGTON
PARK

MASTER BEDROOM



ARLINGTON
PARK



MASTER BATHROOMS



ARLINGTON
PARK

SECONDARY BEDROOM

ARLINGTON PARK

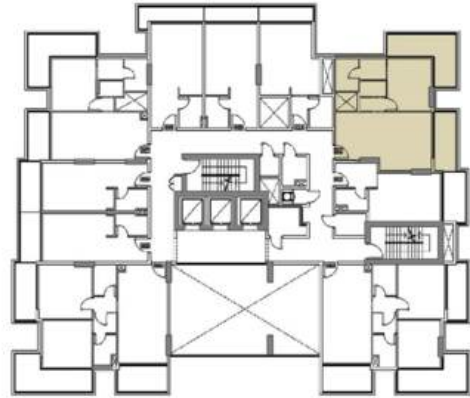
NEIGHBOUR 50.00M



FIRST FLOOR PLAN

Disclaimer: all pictures, plans, layouts, information, data and details included in this brochure are indicative only and may change at any time up to the final 'as built' status in accordance with the final designs of the project, regulatory approvals and planning permissions.

ARLINGTON PARK



1st FLOOR 1 BEDROOM APARTMENT



UNIT AREA 660 Sq. ft.

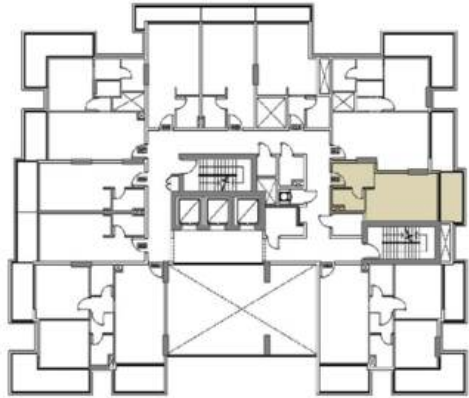
TERR/BAL AREA 241 Sq. ft.

TOTAL AREA 901 Sq. ft.

UNITS 101

Disclaimer: all pictures, plans, layouts, information, data and details included in this brochure are indicative only and may change at any time up to the final 'as built' status in accordance with the final designs of the project, regulatory approvals and planning permissions.

ARLINGTON PARK



1st FLOOR STUDIO APARTMENT



UNIT AREA 356 Sq. ft.

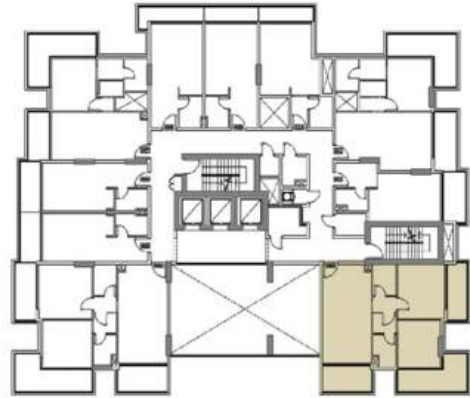
TERR/BAL AREA 77 Sq. ft.

TOTAL AREA 433 Sq. ft.

UNITS 102

Disclaimer: all pictures, plans, layouts, information, data and details included in this brochure are indicative only and may change at any time up to the final 'as built' status in accordance with the final designs of the project, regulatory approvals and planning permissions.

ARLINGTON PARK



1st FLOOR 2 BEDROOM APARTMENT

UNIT AREA 809 Sq. ft.

TERR/BAL AREA 296 Sq. ft.

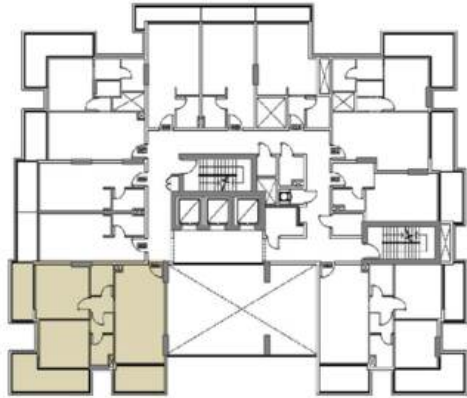
TOTAL AREA 1105 Sq. ft.

UNITS 103



Disclaimer: all pictures, plans, layouts, information, data and details included in this brochure are indicative only and may change at any time up to the final 'as built' status in accordance with the final designs of the project, regulatory approvals and planning permissions.

ARLINGTON PARK



1st FLOOR 2 BEDROOM APARTMENT

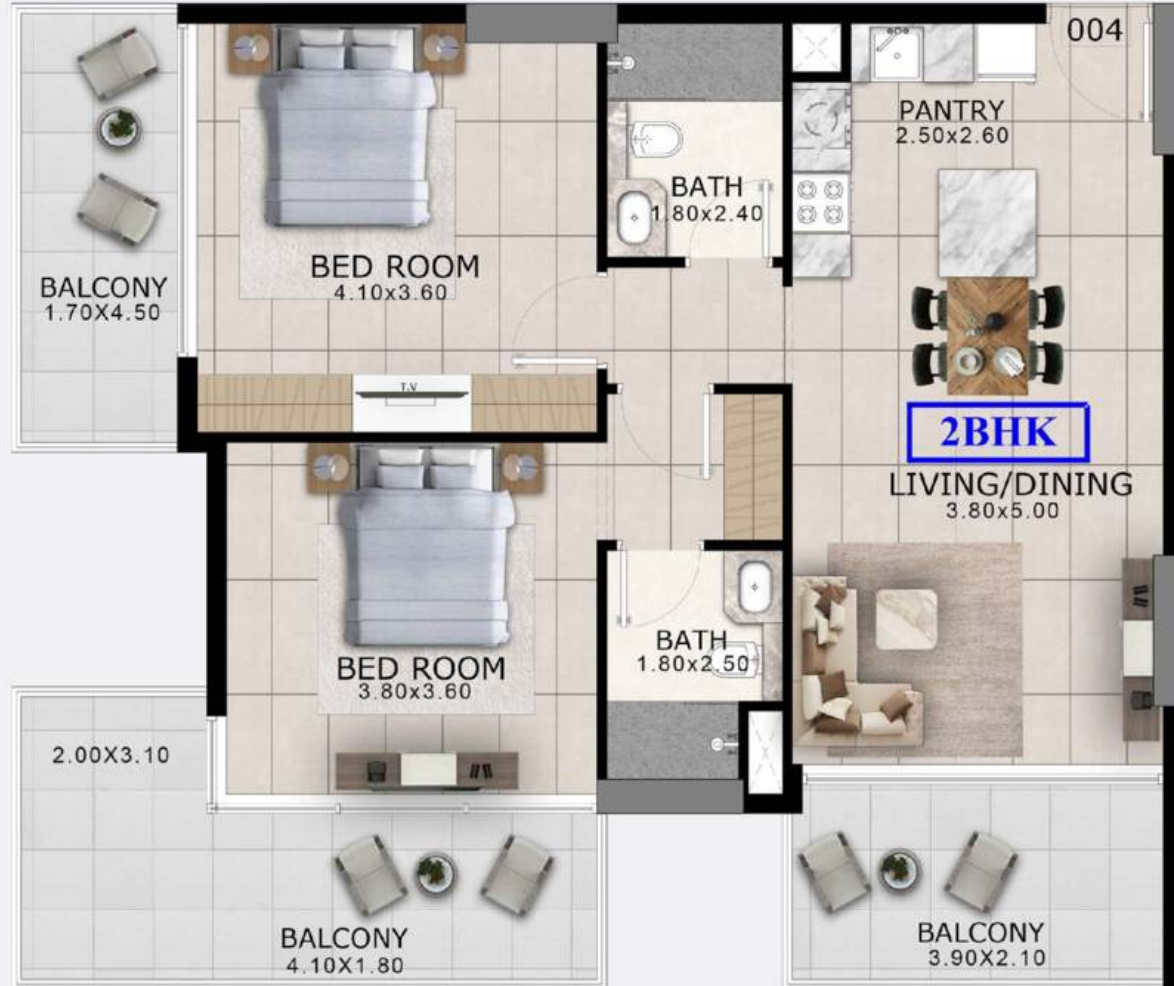
UNIT AREA 847 Sq. ft.

TERR/BAL AREA 314 Sq. ft.

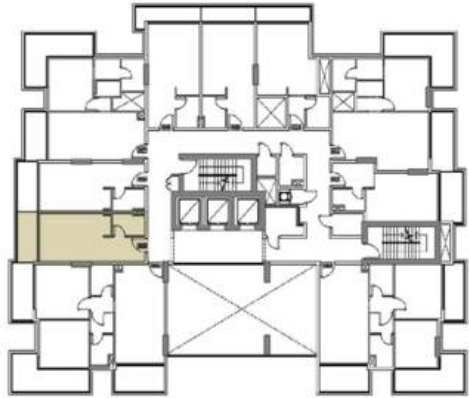
TOTAL AREA 1161 Sq. ft.

UNITS 104

Disclaimer: all pictures, plans, layouts, information, data and details included in this brochure are indicative only and may change at any time up to the final 'as built' status in accordance with the final designs of the project, regulatory approvals and planning permissions.



ARLINGTON PARK



1st FLOOR STUDIO APARTMENT



UNIT AREA 345 Sq. ft.

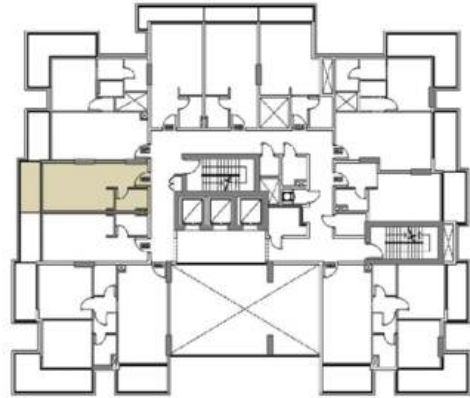
TERR/BAL AREA 68 Sq. ft.

TOTAL AREA 413 Sq. ft.

UNITS 105

Disclaimer: all pictures, plans, layouts, information, data and details included in this brochure are indicative only and may change at any time up to the final 'as built' status in accordance with the final designs of the project, regulatory approvals and planning permissions.

ARLINGTON PARK



1st FLOOR STUDIO APARTMENT



UNIT AREA 345 Sq. ft.

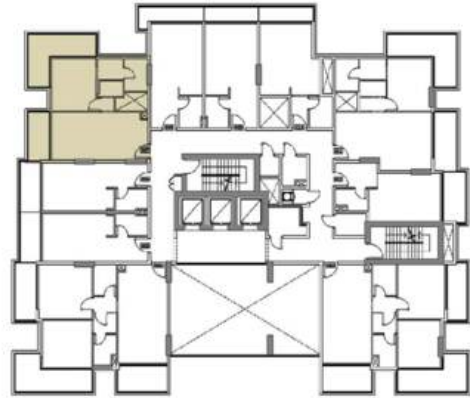
TERR/BAL AREA 68 Sq. ft.

TOTAL AREA 413 Sq. ft.

UNITS 106

Disclaimer: all pictures, plans, layouts, information, data and details included in this brochure are indicative only and may change at any time up to the final 'as built' status in accordance with the final designs of the project, regulatory approvals and planning permissions.

ARLINGTON PARK



1st FLOOR 1 BEDROOM APARTMENT

UNIT AREA 610 Sq. ft.

TERR/BAL AREA 216 Sq. ft.

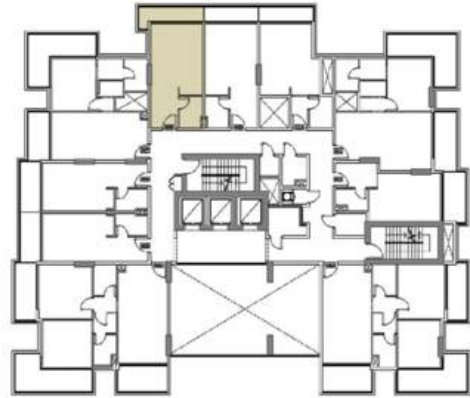
TOTAL AREA 826 Sq. ft.

UNITS 107

Disclaimer: all pictures, plans, layouts, information, data and details included in this brochure are indicative only and may change at any time up to the final 'as built' status in accordance with the final designs of the project, regulatory approvals and planning permissions.



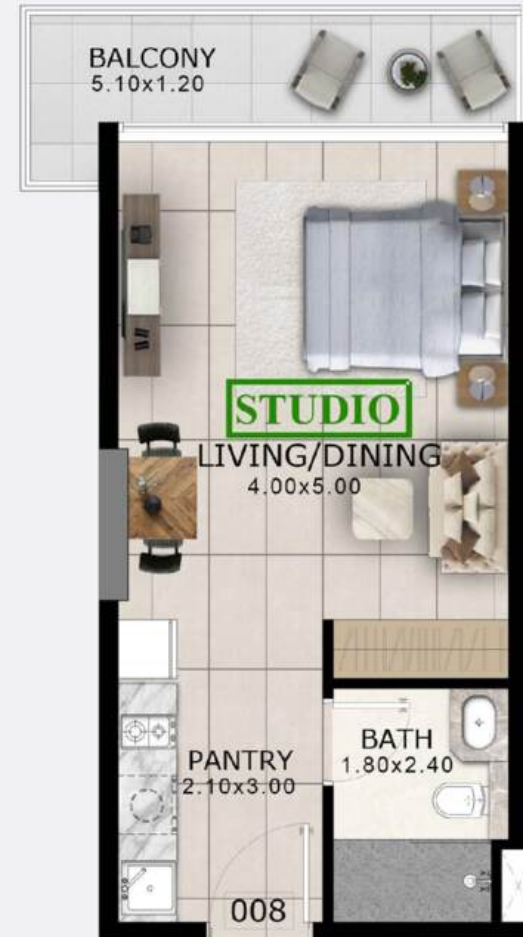
ARLINGTON PARK



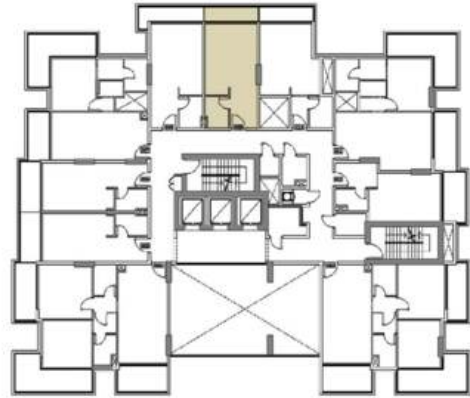
1st FLOOR STUDIO APARTMENT

UNIT AREA	369 Sq. ft.
TERR/BAL AREA	71 Sq. ft.
TOTAL AREA	440 Sq. ft.
UNITS	108

Disclaimer: all pictures, plans, layouts, information, data and details included in this brochure are indicative only and may change at any time up to the final 'as built' status in accordance with the final designs of the project, regulatory approvals and planning permissions.



ARLINGTON PARK



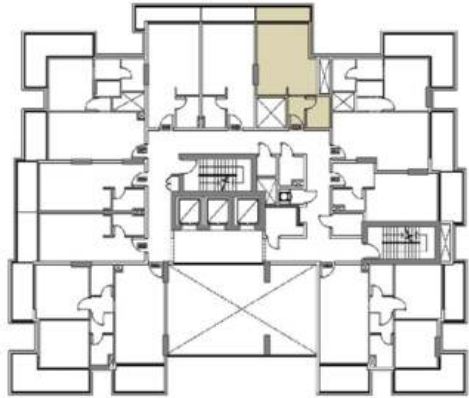
1st FLOOR STUDIO APARTMENT

UNIT AREA	369 Sq. ft.
TERR/BAL AREA	55 Sq. ft.
TOTAL AREA	424 Sq. ft.
UNITS	109

Disclaimer: all pictures, plans, layouts, information, data and details included in this brochure are indicative only and may change at any time up to the final 'as built' status in accordance with the final designs of the project, regulatory approvals and planning permissions.



ARLINGTON PARK



1st FLOOR STUDIO APARTMENT

UNIT AREA	370 Sq. ft.
TERR/BAL AREA	56 Sq. ft.
TOTAL AREA	426 Sq. ft.
UNITS	110

Disclaimer: all pictures, plans, layouts, information, data and details included in this brochure are indicative only and may change at any time up to the final 'as built' status in accordance with the final designs of the project, regulatory approvals and planning permissions.



ARLINGTON PARK

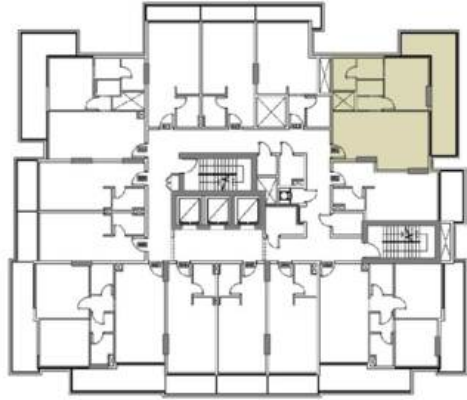
NEIGHBOUR 50.00M



TYPICAL FLOOR PLAN (2,4,6,8 & 10)

Disclaimer: all pictures, plans, layouts, information, data and details included in this brochure are indicative only and may change at any time up to the final 'as built' status in accordance with the final designs of the project, regulatory approvals and planning permissions.

ARLINGTON PARK



TYPICAL (2,4,6,8 & 10) FLOOR 1 BEDROOM APARTMENTS

UNIT AREA 660 Sq. ft.

TERR/BAL AREA 250 Sq. ft.

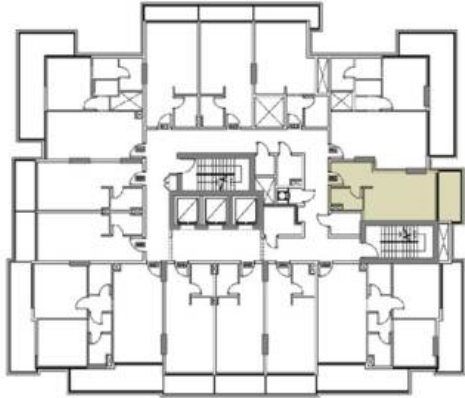
TOTAL AREA 910 Sq. ft.

UNITS 201,401,601,801 & 1001



Disclaimer: all pictures, plans, layouts, information, data and details included in this brochure are indicative only and may change at any time up to the final 'as built' status in accordance with the final designs of the project, regulatory approvals and planning permissions.

ARLINGTON PARK



TYPICAL (2,4,6,8 & 10) FLOOR STUDIO APARTMENTS



UNIT AREA 356 Sq. ft.

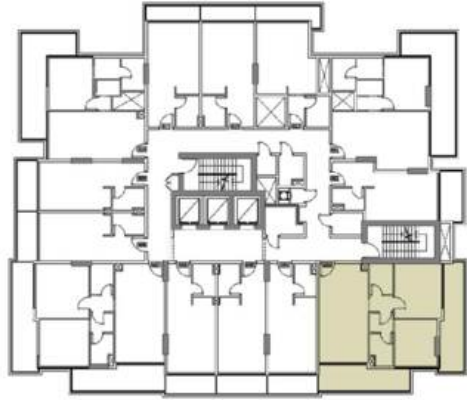
TERR/BAL AREA 77 Sq. ft.

TOTAL AREA 433 Sq. ft.

UNITS 202,402,602,802 & 1002

Disclaimer: all pictures, plans, layouts, information, data and details included in this brochure are indicative only and may change at any time up to the final 'as built' status in accordance with the final designs of the project, regulatory approvals and planning permissions.

ARLINGTON PARK



TYPICAL (2,4,6,8 & 10) FLOOR 2 BEDROOM APARTMENTS

UNIT AREA 809 Sq. ft.

TERR/BAL AREA 312 Sq. ft.

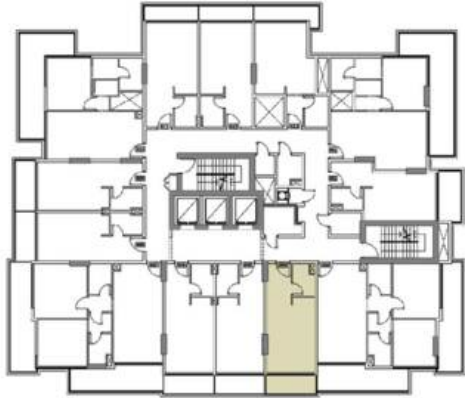
TOTAL AREA 1121 Sq. ft.

UNITS 203,403,603,803 & 1003



Disclaimer: all pictures, plans, layouts, information, data and details included in this brochure are indicative only and may change at any time up to the final 'as built' status in accordance with the final designs of the project, regulatory approvals and planning permissions.

ARLINGTON PARK



TYPICAL (2,4,6,8 & 10) FLOOR STUDIO APARTMENTS

UNIT AREA 356 Sq. ft.

TERR/BAL AREA 64 Sq. ft.

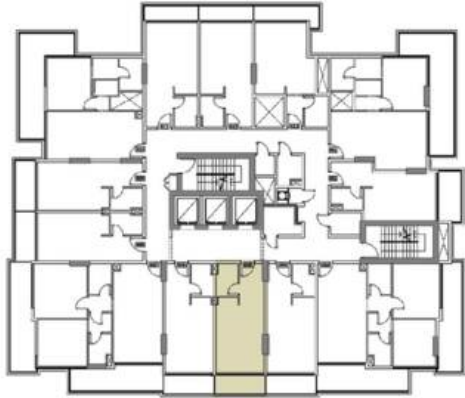
TOTAL AREA 420 Sq. ft.

UNITS 204,404,604,804 & 1004

Disclaimer: all pictures, plans, layouts, information, data and details included in this brochure are indicative only and may change at any time up to the final 'as built' status in accordance with the final designs of the project, regulatory approvals and planning permissions.



ARLINGTON PARK



TYPICAL (2,4,6,8 & 10) FLOOR STUDIO APARTMENTS

UNIT AREA 357 Sq. ft.

TERR/BAL AREA 64 Sq. ft.

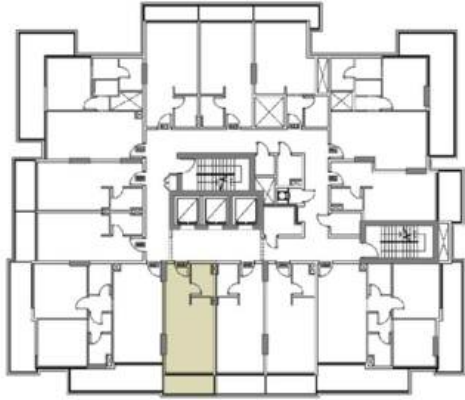
TOTAL AREA 421 Sq. ft.

UNITS 205,405,605,805 & 1005

Disclaimer: all pictures, plans, layouts, information, data and details included in this brochure are indicative only and may change at any time up to the final 'as built' status in accordance with the final designs of the project, regulatory approvals and planning permissions.



ARLINGTON PARK



TYPICAL (2,4,6,8 & 10) FLOOR STUDIO APARTMENTS

UNIT AREA 357 Sq. ft.

TERR/BAL AREA 64 Sq. ft.

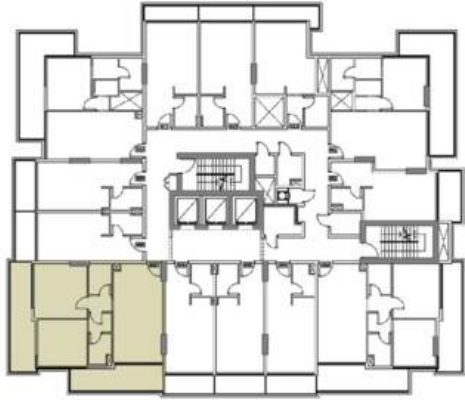
TOTAL AREA 421 Sq. ft.

UNITS 206,406,606,806 & 1006

Disclaimer: all pictures, plans, layouts, information, data and details included in this brochure are indicative only and may change at any time up to the final 'as built' status in accordance with the final designs of the project, regulatory approvals and planning permissions.



ARLINGTON PARK



TYPICAL (2,4,6,8 & 10) FLOOR 2 BEDROOM APARTMENTS

UNIT AREA 847 Sq. ft.

TERR/BAL AREA 325 Sq. ft.

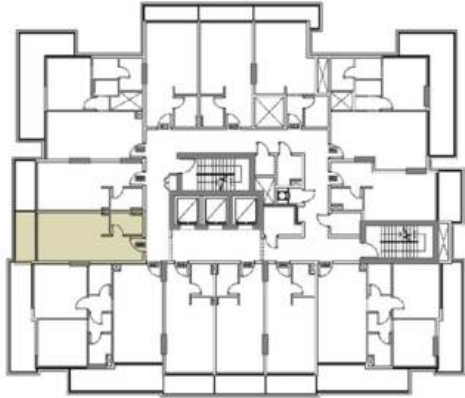
TOTAL AREA 1172 Sq. ft.

UNITS 207,407,607,807 & 1007



Disclaimer: all pictures, plans, layouts, information, data and details included in this brochure are indicative only and may change at any time up to the final 'as built' status in accordance with the final designs of the project, regulatory approvals and planning permissions.

ARLINGTON PARK



TYPICAL (2,4,6,8 & 10) FLOOR STUDIO APARTMENTS



UNIT AREA 345 Sq. ft.

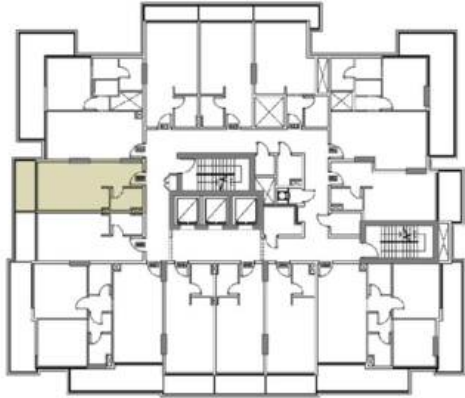
TERR/BAL AREA 68 Sq. ft.

TOTAL AREA 413 Sq. ft.

UNITS 208,408,608,808 & 1008

Disclaimer: all pictures, plans, layouts, information, data and details included in this brochure are indicative only and may change at any time up to the final 'as built' status in accordance with the final designs of the project, regulatory approvals and planning permissions.

ARLINGTON PARK



TYPICAL (2,4,6,8 & 10) FLOOR STUDIO APARTMENTS



UNIT AREA 345 Sq. ft.

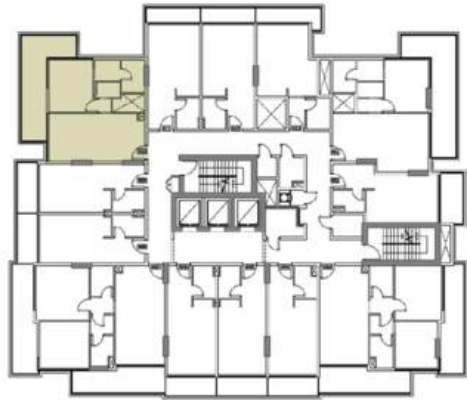
TERR/BAL AREA 68 Sq. ft.

TOTAL AREA 413 Sq. ft.

UNITS 209,409,609,809 & 1009

Disclaimer: all pictures, plans, layouts, information, data and details included in this brochure are indicative only and may change at any time up to the final 'as built' status in accordance with the final designs of the project, regulatory approvals and planning permissions.

ARLINGTON PARK



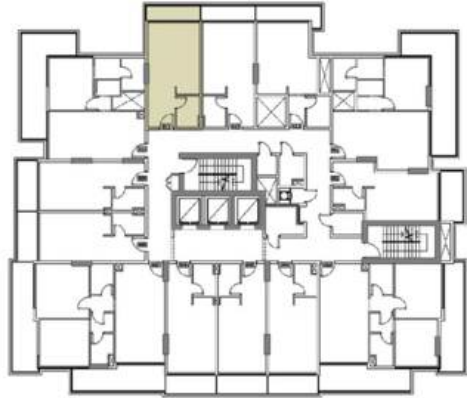
TYPICAL (2,4,6,8 & 10) FLOOR 1 BEDROOM APARTMENTS

UNIT AREA	610 Sq. ft.
TERR/BAL AREA	221 Sq. ft.
TOTAL AREA	831 Sq. ft.
UNITS	210,410,610,810 & 1010

Disclaimer: all pictures, plans, layouts, information, data and details included in this brochure are indicative only and may change at any time up to the final 'as built' status in accordance with the final designs of the project, regulatory approvals and planning permissions.



ARLINGTON PARK



TYPICAL (2,4,6,8 & 10) FLOOR STUDIO APARTMENTS

UNIT AREA 369 Sq. ft.

TERR/BAL AREA 55 Sq. ft.

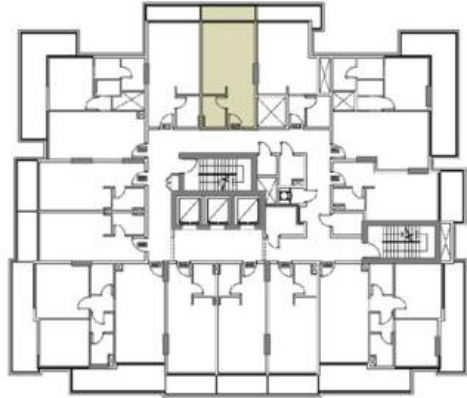
TOTAL AREA 424 Sq. ft.

UNITS 211,411,611,811 & 1011

Disclaimer: all pictures, plans, layouts, information, data and details included in this brochure are indicative only and may change at any time up to the final 'as built' status in accordance with the final designs of the project, regulatory approvals and planning permissions.



ARLINGTON PARK



TYPICAL (2,4,6,8 & 10) FLOOR STUDIO APARTMENTS

UNIT AREA 369 Sq. ft.

TERR/BAL AREA 56 Sq. ft.

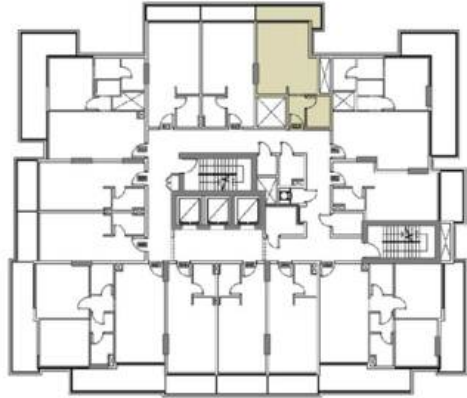
TOTAL AREA 425 Sq. ft.

UNITS 212,412,612,812 & 1012

Disclaimer: all pictures, plans, layouts, information, data and details included in this brochure are indicative only and may change at any time up to the final 'as built' status in accordance with the final designs of the project, regulatory approvals and planning permissions.



ARLINGTON PARK



TYPICAL (2,4,6,8 & 10) FLOOR STUDIO APARTMENTS

UNIT AREA 370 Sq. ft.

TERR/BAL AREA 71 Sq. ft.

TOTAL AREA 441 Sq. ft.

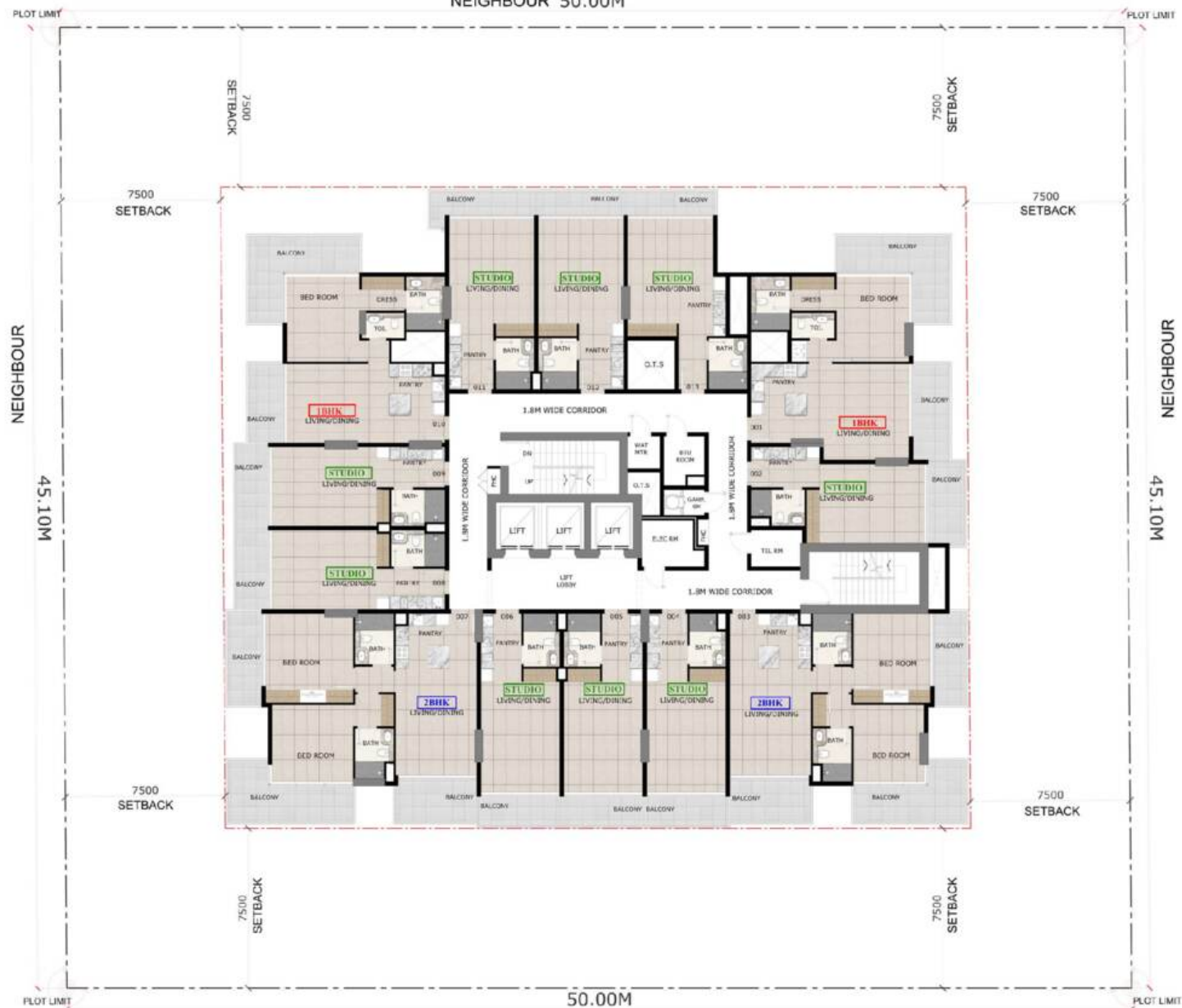
UNITS 213,413,613,813 & 1013



Disclaimer: all pictures, plans, layouts, information, data and details included in this brochure are indicative only and may change at any time up to the final 'as built' status in accordance with the final designs of the project, regulatory approvals and planning permissions.

ARLINGTON PARK

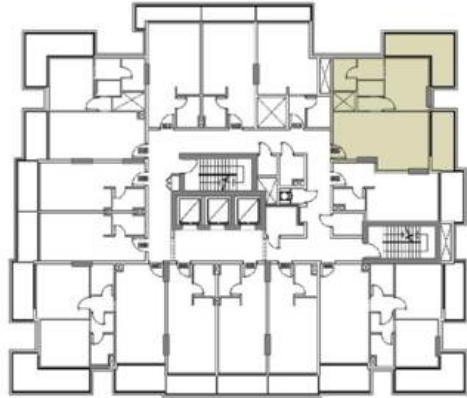
NEIGHBOUR 50.00M



TYPICAL FLOOR PLAN (3,5,7,9 & 11)

Disclaimer: all pictures, plans, layouts, information, data and details included in this brochure are indicative only and may change at any time up to the final 'as built' status in accordance with the final designs of the project, regulatory approvals and planning permissions.

ARLINGTON PARK



TYPICAL (3,5,7,9 & 11) FLOOR 1 BEDROOM APARTMENTS

UNIT AREA 660 Sq. ft.

TERR/BAL AREA 241 Sq. ft.

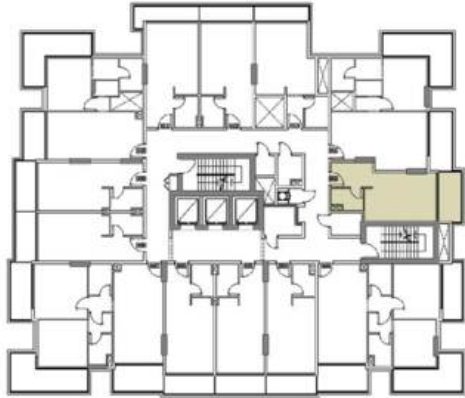
TOTAL AREA 901 Sq. ft.

UNITS 301,501,701,901 & 1101



Disclaimer: all pictures, plans, layouts, information, data and details included in this brochure are indicative only and may change at any time up to the final 'as built' status in accordance with the final designs of the project, regulatory approvals and planning permissions.

ARLINGTON PARK



TYPICAL (3,5,7,9 & 11) FLOOR STUDIO APARTMENTS



UNIT AREA 356 Sq. ft.

TERR/BAL AREA 77 Sq. ft.

TOTAL AREA 433 Sq. ft.

UNITS 302,502,702,902 & 1102

Disclaimer: all pictures, plans, layouts, information, data and details included in this brochure are indicative only and may change at any time up to the final 'as built' status in accordance with the final designs of the project, regulatory approvals and planning permissions.

ARLINGTON PARK



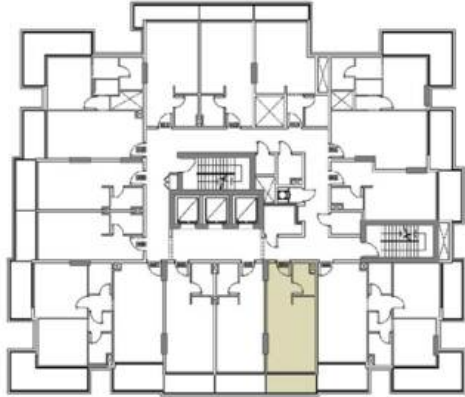
TYPICAL (3,5,7,9 & 11) FLOOR 2 BEDROOM APARTMENTS

UNIT AREA	809 Sq. ft.
TERR/BAL AREA	295 Sq. ft.
TOTAL AREA	1104 Sq. ft.
UNITS	303,503,703,903 & 1103



Disclaimer: all pictures, plans, layouts, information, data and details included in this brochure are indicative only and may change at any time up to the final 'as built' status in accordance with the final designs of the project, regulatory approvals and planning permissions.

ARLINGTON PARK



TYPICAL (3,5,7,9 & 11) FLOOR STUDIO APARTMENTS

UNIT AREA 356 Sq. ft.

TERR/BAL AREA 64 Sq. ft.

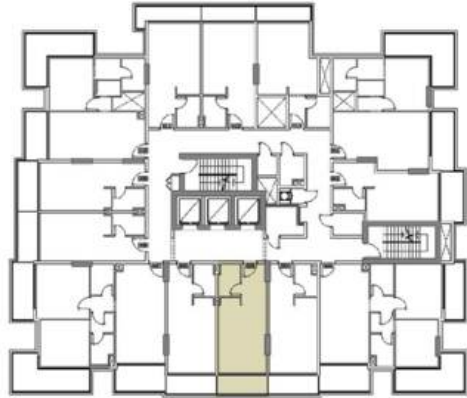
TOTAL AREA 420 Sq. ft.

UNITS 304,504,704,904 & 1104

Disclaimer: all pictures, plans, layouts, information, data and details included in this brochure are indicative only and may change at any time up to the final 'as built' status in accordance with the final designs of the project, regulatory approvals and planning permissions.



ARLINGTON PARK



TYPICAL (3,5,7,9 & 11) FLOOR STUDIO APARTMENTS

UNIT AREA 357 Sq. ft.

TERR/BAL AREA 64 Sq. ft.

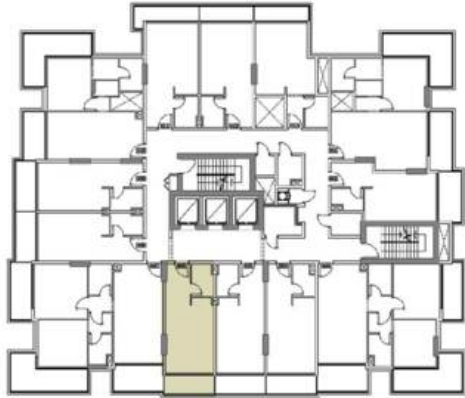
TOTAL AREA 421 Sq. ft.

UNITS 305,505,705,905 & 1105

Disclaimer: all pictures, plans, layouts, information, data and details included in this brochure are indicative only and may change at any time up to the final 'as built' status in accordance with the final designs of the project, regulatory approvals and planning permissions.



ARLINGTON PARK



TYPICAL (3,5,7,9 & 11) FLOOR STUDIO APARTMENTS

UNIT AREA 357 Sq. ft.

TERR/BAL AREA 64 Sq. ft.

TOTAL AREA 421 Sq. ft.

UNITS 306,506,706,906 & 1106

Disclaimer: all pictures, plans, layouts, information, data and details included in this brochure are indicative only and may change at any time up to the final 'as built' status in accordance with the final designs of the project, regulatory approvals and planning permissions.



ARLINGTON PARK



TYPICAL (3,5,7,9 & 11) FLOOR 2 BEDROOM APARTMENTS

UNIT AREA 847 Sq. ft.

TERR/BAL AREA 313 Sq. ft.

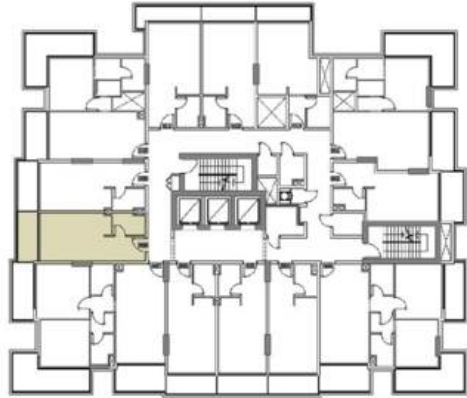
TOTAL AREA 1160 Sq. ft.

UNITS 307,507,707,907 & 1107



Disclaimer: all pictures, plans, layouts, information, data and details included in this brochure are indicative only and may change at any time up to the final 'as built' status in accordance with the final designs of the project, regulatory approvals and planning permissions.

ARLINGTON PARK



TYPICAL (3,5,7,9 & 11) FLOOR STUDIO APARTMENTS



UNIT AREA 345 Sq. ft.

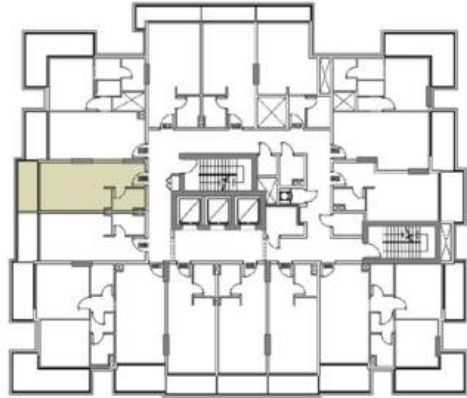
TERR/BAL AREA 68 Sq. ft.

TOTAL AREA 413 Sq. ft.

UNITS 308,508,708,908 & 1108

Disclaimer: all pictures, plans, layouts, information, data and details included in this brochure are indicative only and may change at any time up to the final 'as built' status in accordance with the final designs of the project, regulatory approvals and planning permissions.

ARLINGTON PARK



TYPICAL (3,5,7,9 & 11) FLOOR STUDIO APARTMENTS



UNIT AREA 345 Sq. ft.

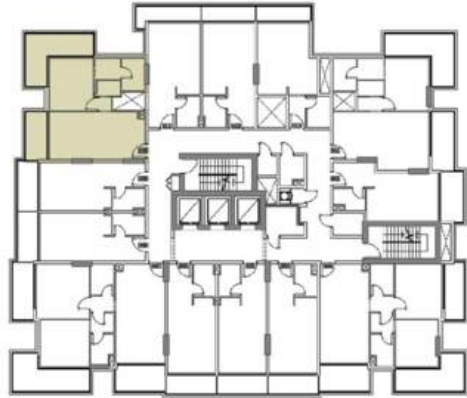
TERR/BAL AREA 68 Sq. ft.

TOTAL AREA 413 Sq. ft.

UNITS 309,509,709,909 & 1109

Disclaimer: all pictures, plans, layouts, information, data and details included in this brochure are indicative only and may change at any time up to the final 'as built' status in accordance with the final designs of the project, regulatory approvals and planning permissions.

ARLINGTON PARK



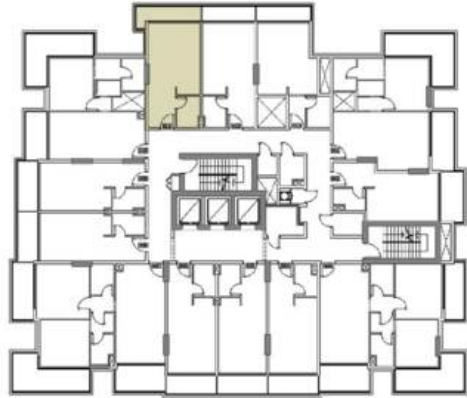
TYPICAL (3,5,7,9 & 11) FLOOR 1 BEDROOM APARTMENTS

UNIT AREA	610 Sq. ft.
TERR/BAL AREA	216 Sq. ft.
TOTAL AREA	826 Sq. ft.
UNITS	310,510,710,910 & 1110

Disclaimer: all pictures, plans, layouts, information, data and details included in this brochure are indicative only and may change at any time up to the final 'as built' status in accordance with the final designs of the project, regulatory approvals and planning permissions.



ARLINGTON PARK



TYPICAL (3,5,7,9 & 11) FLOOR STUDIO APARTMENTS

UNIT AREA 369 Sq. ft.

TERR/BAL AREA 71 Sq. ft.

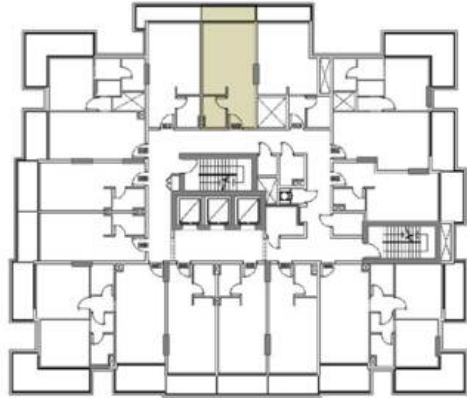
TOTAL AREA 440 Sq. ft.

UNITS 311,511,711,911 & 1111

Disclaimer: all pictures, plans, layouts, information, data and details included in this brochure are indicative only and may change at any time up to the final 'as built' status in accordance with the final designs of the project, regulatory approvals and planning permissions.



ARLINGTON PARK



TYPICAL (3,5,7,9 & 11) FLOOR STUDIO APARTMENTS

UNIT AREA 369 Sq. ft.

TERR/BAL AREA 55 Sq. ft.

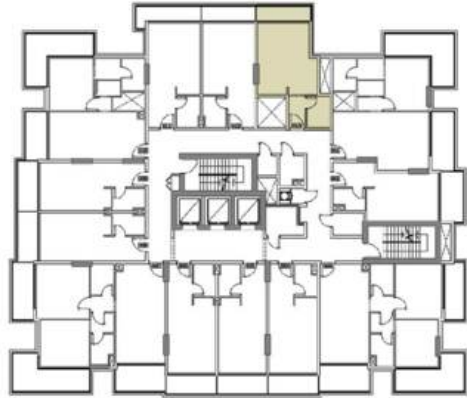
TOTAL AREA 424 Sq. ft.

UNITS 312,512,712,912 & 1112

Disclaimer: all pictures, plans, layouts, information, data and details included in this brochure are indicative only and may change at any time up to the final 'as built' status in accordance with the final designs of the project, regulatory approvals and planning permissions.



ARLINGTON PARK



TYPICAL (3,5,7,9 & 11) FLOOR STUDIO APARTMENTS

UNIT AREA 370 Sq. ft.

TERR/BAL AREA 56 Sq. ft.

TOTAL AREA 426 Sq. ft.

UNITS 313,513,713,913 & 1113

Disclaimer: all pictures, plans, layouts, information, data and details included in this brochure are indicative only and may change at any time up to the final 'as built' status in accordance with the final designs of the project, regulatory approvals and planning permissions.





MAJID

ARLINGTON
PARK

ARLINGTON
PARK

BUILDING FACT SHEET

Building Configuration: 2B + G + 11 + R

Key Views: Community & Park View

Total Units: 140 Apartments

Unit Mix: 96 Studios, 22 One-Bedroom, 22 Two-Bedroom

Studio Sizes: 413 sqft - 441 sqft

1 Bedroom Sizes: 826 sqft - 901 sqft

2 Bedroom Sizes: 1101 sqft - 1172 sqft

Furnishing: Fully Furnished

Service Charges: 13 - 15 AED PSF

Ownership: Freehold

Location: Dubai Land Residence Complex

Handover: Q4 2027



PAYMENT PLAN

OPTION 1 – 65/35 POST-HANDOVER PLAN

TOTAL POST-HANDOVER DURATION: 36 MONTHS

DOWN PAYMENT + DLD	20 + 4%
After 6 Months	7.5%
After 12 Months	7.5%
After 18 Months	7.5%
After 24 Months	7.5%
After 30 Months	10%
On Handover (Q4 2027)	5%
Post-Handover (36 mos)	35%



ARKINGTON
PARK

PAYMENT PLAN

OPTION 2 – 60/40 PAYMENT PLAN

BOOKING + 4% DLD	20 + 4%
After 6 Months	7.5%
After 12 Months	7.5%
After 18 Months	7.5%
After 24 Months	7.5%
After 30 Months	10%
On Handover (Q4 2027)	40%



MAJID[®]

DEVELOPMENTS

SHAPING LUXURY LIVING, INNOVATING SUSTAINABLE FUTURES

Majid Developments is a visionary real estate development company based in Dubai. Our mission is to redefine luxury living by delivering high-end, meticulously designed properties to our discerning clientele. We focus on creating distinguished lifestyle experiences that reflect our clients' high expectations and aspirations. Our dedication to quality, precision, and style is evident in every project we undertake.

KEY HIGHLIGHTS:

Visionary Leadership: Guided by a commitment to excellence and innovation.

Meticulous Design: Every project showcases our attention to detail and quality.

Client-Centric Approach: Tailoring experiences to meet the aspirations of our clientele.

Sustainable Development: Emphasizing environmentally responsible building practices.

ARLINGTON
PARK

MAJID
DEVELOPMENTS

majiddevelopments.com